

HDPE MEMBRANE SYSTEMS



GreenShield

Heatshielding & Waterproofing Your Roof




WATERPROOFING UNDERGROUND & BELOW GRADE STRUCTURES

GreenShield™ HDPE membrane is India's first locally manufactured polyethylene membrane composite system for basement, podium and underground structure waterproofing while servicing India's growing need for access to better construction technologies.

With over 35 years of experience in manufacturing innovative polymer compounds for automotive, medical & healthcare, construction, wire & cable, agriculture, appliances, and FMCG; Zylog forward integrated into manufacturing these membranes to meet India's requirements of sustainable building materials, meeting building and energy conservation codes.



Localizing this globally tested and proven waterproofing system, GreenShield™ is Zylog's promise of helping enhance quality & speed of construction in India.



Flexible and fully bonded GS PE membrane systems are engineered to protect basement, podiums and underground concrete structures from potential harmful influences of aggressive natural mediums and gasses in soil and ground / sea water.

GreenShield™ manufactures flexible PE membrane systems that meet and accommodate stringent requirements of water tightness and long-term durability of basements, underground spaces, storage areas, podiums, retaining walls, and such across residential and commercial buildings and other large infrastructures.

Due to its simple, fast and secure application, the GS PE membrane system can be used on new as well as renovation of existing structures.

The fully bonded membrane system provides a high level of dry environment, protecting the concrete structure, while building up a full surface bond together with the concrete, preventing lateral water migration between the structure and the membrane.

The high reliability and watertight protection achieved with the GS PE systems combined with our global experience of over 35 years, gives builders,

developers, contractors, specifiers and architects the highest level of confidence in achieving their objectives.

GS PE is a solid, impermeable, flexible membrane, that acts as a barrier, not allowing contact between the concrete structure and ground water or soil.

It is non-porous with excellent weathering and chemical resistance properties protecting the structure above from aggressive salts, chemical corrosion, algae, fungi and bacterial growth. The membrane is UV stable for 5 years, providing longer resistance to UV, allowing hassle free work freedom to contractors. Besides this, the membrane has excellent root penetration resistance too.

Fully bonded, overlapped seam joints, makes the system monolithic, without concerns of leakages, providing ease of installation.



GreenShield™ has 3 specific HDPE membranes, suitable for applications across different areas, accommodating requirements of architects, builders and contractors.

GS PE PSA:

HDPE membrane with a layer of pressure sensitive adhesive, layered with a protective film. Suitable for application on side walls. The adhesive bonds strongly with the wall surface, protecting it from backfill.

GS PE PSA + SAND

HDPE membrane with a layer of pressure sensitive adhesive, topped with micronized sand. Suitable for basement, applied below raft. Fresh poured concrete activates the adhesive on contact, forming a strong bond, creating a monolithic layer.

GS PE RF BG (S)

HDPE membrane with a layer of fleece. Suitable for basement & podiums, applied below raft. Fresh poured concrete runs into the fleece, creating a secured monolithic bond.



15 YEARS GUARANTEE

GreenShield™ approved applicators are trained to carry out installation and repair works, backed by company guarantee of 15+ years.



APPLICATION AREAS

GREENSHIELD™ PE Membranes

BASEMENT WATERPROOFING:

- Basements – Positive Side, embedded within sub-structure
- Retaining Walls



PODIUM WATERPROOFING:

- Podium – Dry & Wet Areas, Vegetation Areas
- Multi-level car parking



METRO STATIONS, TUNNELS:

- Underground stations
- Underpasses for road and rail network



WATER TANK LINERS:

- Drinking Water tanks – FDA Compliant special grade
- Overhead concrete water tanks
- Underground concrete water tanks
- Chemical storage tanks



Ease of application

The installation is simple. For horizontal surfaces, unroll the membranes and allow to rest at location for 30 mins – flattening the sheets out. Use seam tapes on the overlap of the membranes, along the length, press to adhere the 2 edges, securing the membranes in place. Verify the seam joint and ensure there are no open edges.

For vertical surfaces, peel off the release liner, press the membrane onto the wall, which quickly adheres to the hardened substrate. Seams are overlapped and press joint.





***We care
about the
environment***

Zylog is committed to operating in an environmentally responsible manner. Our facilities meet ISO 14001 environmental management system requirements, with a minimal carbon footprint, exhaustive ground water recharge systems, recycling of waste water, insulated building for reduced electricity consumption.

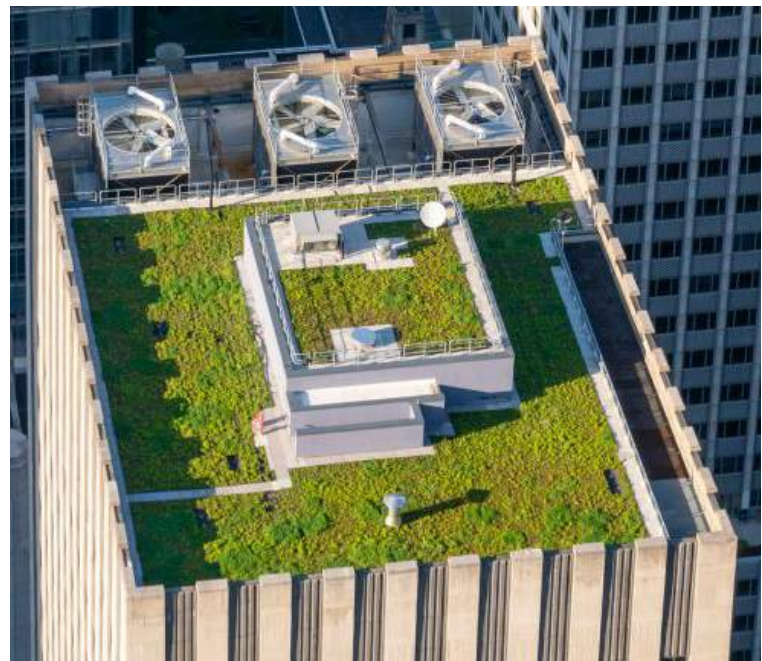
GreenShield™ itself is a energy efficient roofing membrane, helping conserve energy and thus reduce resource wastage.

GREEN ROOFS

GreenShield™ extensively promotes setting up Green roofs across our cities. GS TPO membranes are ideal for creating living breathing vegetation on roof tops of buildings, thus increasing the green cover of the cities.

GS TPO Membrane has successfully passed EN 13948 Root Penetration resistance test and is an ideal membrane for creating lightweight, low maintenance vegetation. Benefits include:

- Reduces Urban Heat Island Effect
- Reduces energy costs associated with cooling, A/C
- Reduces water drain off, increases evaporation
- Improves air quality, reduces CO₂
- Reduces noise pollution



OTHER ALLIED PRODUCTS & ACCESSORIES

TPO MEMBRANE

GS TPO range of membranes are based on thermoplastic polyolefin, servicing wide applications across PEB & RCC structures. The membranes include, scrim reinforced, single side fleece backed, double side fleece backed, FDA potable water tank liners, suitable for loosely laid, mechanically fastened or fully adhered systems. The membranes are manufactured in widths up to 2 meters, in thickness of 1.2 and 1.5 mm, supplied in roll form.



TPE EXPANSION JOINT TAPES & PROFILES

GS TPE tapes and profiles are based on thermoplastic elastomer, designed for expansion joint applications below grade or exposed, for podiums, parking areas, basements, foundations, pool, treatment plants, water tanks, tunnel segments, for dynamic cracks and cold joints across vertical and horizontal surfaces. Manufactured in widths from 100 mm up to 1000 mm with thickness of 1, 1.5 & 2 mm, supplied in roll form.



MEMBRANE ACCESSORIES

Besides membranes, we also supply a range of accessories, designed to ease installation. These include roof drains, flexible collars, internal and external corners, flashings and edge strips, termination bars, screws, fasteners and washers, walkways, tube wraps, skylights – transparent sheet that easily heat weld to the membrane



ADHESIVE

GS EJ 2K EP adhesive is a two-part, high performance epoxy-based adhesive, designed for bonding GS TPE expansion joint tapes & profiles to different substrates. The adhesive resin (Part A) and hardener (Part B) together provide a thixotropic mix, easy to apply on vertical & horizontal surfaces, with a long enough pot life to allow adequate adhesive application, positioning and aligning time, forming a watertight surface.





GreenShield

Heatshielding & Waterproofing Your Roof

This brochure is meant only to highlight Zylog's products and specifications. Information is subject to change without notice. All products and specifications are listed in approximate weights and measurements. For complete product and detail information, please refer to the technical information posted on our website or contact us directly. Zylog takes responsibility for furnishing quality materials which meet Zylog's declared product specifications. Since neither Zylog itself nor its representatives practice architecture, Zylog offers no opinion and expressly disclaims any responsibility for the soundness of any structure on which its products may be applied. If questions arise to this effect or products ability to support a planned installation properly, the owner should obtain opinions of competent structural engineers before proceeding. Zylog accepts no liability for any structural failure or for resultant damages and no Zylog Representative is authorized to vary this disclaimer.

Zylog ElastoComp

Zylog House | Lane 4 | Kalyaninagar | Pune 411006

Phone: +91 20 2665 0220 | +91 77698 02777

www.greenshield.co.in | sales@greenshield.co.in